



COD VLR TT

M134

2.0 - 60.0 mg/L COD^{b)}

VLR

Dichromate / H₂SO₄

Instrument specific information

The test can be performed on the following devices. In addition, the required cuvette and the absorption range of the photometer are indicated.

Instrument Type	Cuvette	λ	Measuring Range
SpectroDirect, XD 7000, XD 7500	ø 16 mm	347 nm	2.0 - 60.0 mg/L COD ^{b)}

Material

Required material (partly optional):

Reagents	Packaging Unit	Part Number
COD VLR/25	25 pc.	2423100
ValidCheck COD 40 mg/L + TOC 16 mg/L	1 pc.	48371225
ValidCheck WW Effluent Multistandard NH ₄ -N/COD/TOC/NO ₃ -N/PO ₄ -P/TP	1 pc.	48399612

The following accessories are required.

Accessories	Packaging Unit	Part Number
Thermoreactor RD 125	1 pc.	2418940

Application List

- Raw Water Treatment
- Waste Water Treatment

Notes

1. The blank is stable when stored in the dark. Blanks and test vials must be from the same batch.
2. Do not place hot vials in the sample chamber. The most stable measured values can be determined if the vials are left standing overnight.



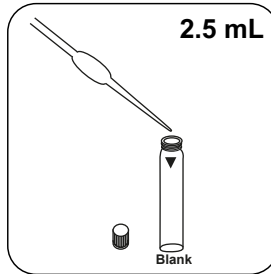


Determination of COD VLR with Vial Test

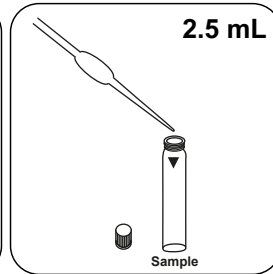
Select the method on the device.



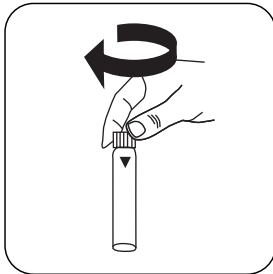
Prepare two **reaction vials**.
Mark one as a blank.



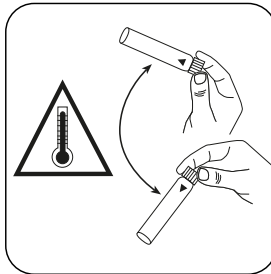
Put **2.5 mL deionised water** in the blank.



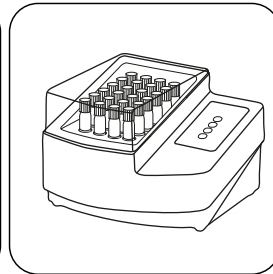
Put **2.5 mL sample** in the sample vial.



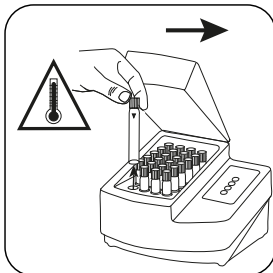
Close vial(s).



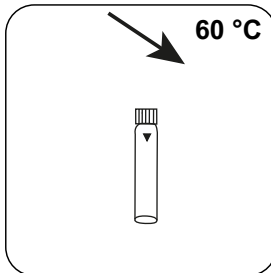
Carefully invert several
times to mix the contents.
Note: Will get hot!



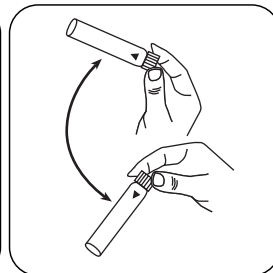
Seal the vials in the pre-
heated thermoreactor for
120 minutes at 150 °C.



Remove the vial from the
thermoreactor. (**Note: vial
will be hot!**)



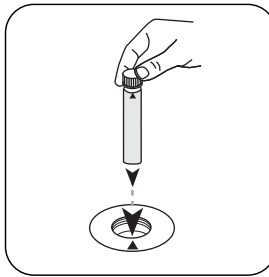
Allow vial(s) to cool to
60 °C.



Invert several times to mix
the contents.



Allow the vial to cool to room temperature and then measure.



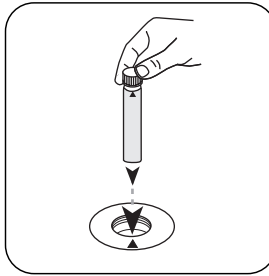
Place **blank** in the sample chamber. • Pay attention to the positioning.



Press the **ZERO** button.



Remove **vial** from the sample chamber.



Place **sample vial** in the sample chamber. • Pay attention to the positioning.



Press the **TEST** (XD: **START**) button.

The result in mg/L COD appears on the display.



Chemical Method

Dichromate / H₂SO₄

Appendix

Calibration function for 3rd-party photometers

Conc. = a + b•Abs + c•Abs² + d•Abs³ + e•Abs⁴ + f•Abs⁵

	ø 16 mm
a	0.00000
b	-4.20708•10 ⁻¹
c	
d	
e	
f	

Interferences

Persistent Interferences

- In exceptional cases, contents, for which the oxidation capacity of the reagent is not sufficient, can lead to lower results.

Removeable Interferences

- Suspended solids in the vial can lead to incorrect measurements and so to avoid this, it is important to place the vials carefully in the sample chamber as the method necessitates a build-up of precipitate at the bottom of the vial.
- The outer walls of the vial must be clean and dry before the analysis is carried out. Fingerprints or water droplets on the vial lead to incorrect measurements.
- In the standard version, chloride interferes from a concentration of 2000 mg/L. For removal of high chloride concentration in COD samples, see method M130 COD LR TT.



Method Validation

Limit of Detection	1.2 mg/L
Limit of Quantification	3.63 mg/L
End of Measuring Range	60 mg/L
Sensitivity	42.18 mg/L / Abs
Confidence Intervall	0.66 mg/L
Standard Deviation	0.27 mg/L
Variation Coefficient	0.88 %

Derived from

ISO 15705:2002
DIN 38409 part 41

⁹⁾ Reactor is necessary for COD (150 °C), TOC (120 °C) and total -chromium, - phosphate, -nitrogen, (100 °C)