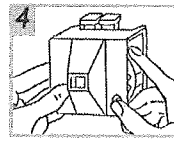
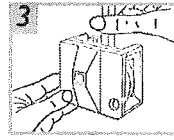
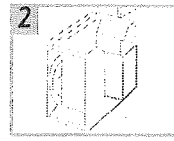
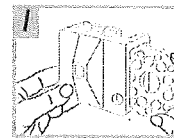


- 1 Select the appropriate Lovibond® test disc and insert into the Comparator with the values towards the front of the instrument.
- 2 Adjust the cell compartment and/or the opaque spacer to suit the size of cell being used.
- 3 Place the cell containing the prepared sample in the right hand compartment (when viewed from the front of the instrument) and, if specified in the test method, a cell containing a blank of water or untreated sample in the left hand side.
- 4 Using a standardised white light source such as a Lovibond® lighting unit, not fluorescent lighting, or with the Comparator facing Northern daylight (Southern daylight in the Southern hemisphere), rotate the disc until the closest colour match with the sample is obtained.
- 5 The value will be shown in the window in the bottom right hand corner of the Comparator.



Glass Cells & Accessories

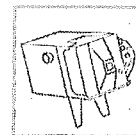
Order No

Square 13.5 mm, 10 ml moulded cell with stoppers (pk of 5).....	35 42 43
Stand for 10 x 13.5 mm cells.....	17 02 60
Rectangular 40 mm moulded cell calibrated to 20 ml	35 42 60
W680 range of fused glass cells - please request further details	

Accessories for the Lovibond® Comparator 2000+

Daylight 2000 Lighting Unit

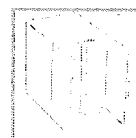
A standardised light source which guarantees constant and uniform lighting conditions for colour matching.



17 20 00

Portable Lighting Unit

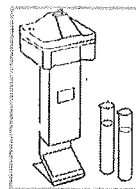
Powered by rechargeable batteries the Portable Lighting Unit assures a constant light source for colour matching in any location.



14 20 50

Nessler 50 Field Kit

Compact Nessler unit for chemical analysis where concentrations are usually below the sensitivity of the Comparator 2000+. Accommodates 50 ml Nessler cylinders with a path length of 113 mm.

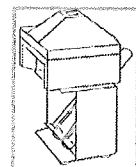


16 10 40

Associated Systems

Milk Viewing Stand

For colorimetric analysis of phosphatase in milk (discs 4/13 and 4/10) and the resazurin test for bacterial content (disc 4/9). Used in conjunction with test tubes, AF215TT (352151)



17 00 60