

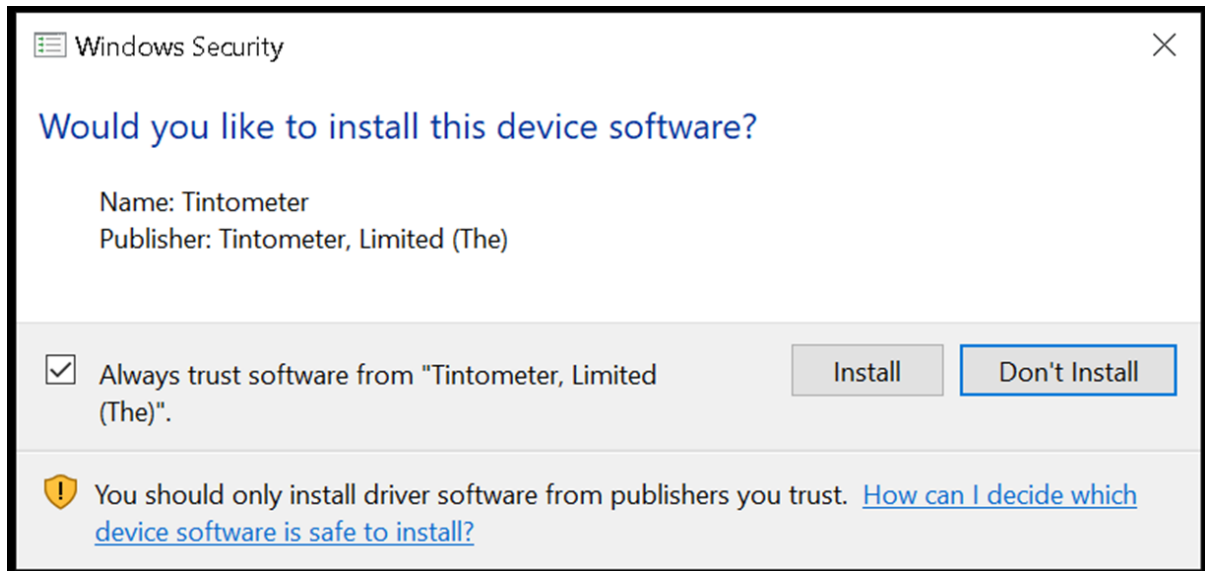
The Tintometer Ltd: Home of the Lovibond® Brand

### **Install PFXi Windows (host) Software v4.05:**

1. Download the PFXi Windows software from: [http://lvinfo.co.uk/downloads/PFXi/PFXi host software 4.05/PFXi\\_Win\\_4\\_05\\_setup.zip](http://lvinfo.co.uk/downloads/PFXi/PFXi%20host%20software%204.05/PFXi_Win_4_05_setup.zip)
2. Unzip the files to a suitable folder and run 'PFXi Win4\_05 setup.exe'.

### **For Windows 10 additionally follow the driver install instructions:**

3. Plug your PFXi into the computer and ensure it is powered on.
4. Windows should recognise the instrument as a PFX Series device and attempt to install drivers.
5. Type "Device Manager" into the search box and open the application.
6. Right click on PFXi and select "Update Driver".
7. Select "Browse my computer for driver Software" from the two options available.
8. Select "Browse" and locate the 'PFXi\_Driver\_Signed\_SHA2' folder in the folder the software was unzipped into.
9. Click Next.
10. You should see the Security warning to the left.
11. It will display similar to the example below:



12. Click on Install button.



The Tintometer Ltd: Home of the Lovibond® Brand

13. Your drivers should now be installed and by running the PFXi Software and restarting your PFXi instrument they should connect.

Should you require any additional assistance please do not hesitate to contact us via [support@lovibond.uk](mailto:support@lovibond.uk) or calling us on +44 (0)1980 664 800



Q852

**Registered Office:**  
The Tintometer Ltd., Lovibond House  
Sun Rise Way,  
Amesbury  
SP4 7GR : UK

**Registered in England No: 45024**

Tel: +44 (0)1980 664800

Fax: +44 (0)1980 625412

Email: [support@lovibond.uk](mailto:support@lovibond.uk) : Internet: [www.lovibond.com](http://www.lovibond.com)

Lovibond® and Tintometer® are registered trademarks of The Tintometer Ltd



0630