

Instrucciones para la determinación de Molibdato

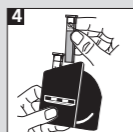
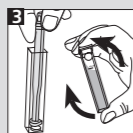
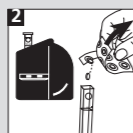
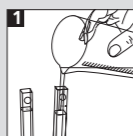
CHECKIT®Disc	Campo de medición	Número de pedido
Molibdato	0 - 100 mg/l MoO ₄	14 62 90

Precisión de discos: ± 5 % del valor final

Tabletas	Número de pedido
MOLYBDATE No. 1 HR	51 30 60
MOLYBDATE No. 2 HR	51 30 70

Molibdato (MOLYBDATE No.1 / No.2 HR-tableta)

- 1 Llenar ambas cubetas con la prueba hasta la marca de 10 ml.
- 2 Colocar una cubeta como ensayo en blanco en el compartimento izquierdo del Comparator. Añadir a la segunda cubeta una tableta MOLYBDATE No.1 HR. Machacarla con una varilla.
- 3 Para la determinación, añadir directamente del papel de aluminio, una tableta MOLYBDATE No. 2 HR en el compartimento de afuera. Machacarla con una varilla. Cerrarla con su tapa y moverlos para disolver las tabletas.
- 4 Colocar esta cubeta en el compartimento derecho.
- 5 Una vez realizada la igualación del color producido en la cubeta con el CHECKIT®Disc, leer el resultado de mg/l MoO₄.
MoO₄ x 1,3 = Na₂MoO₄
MoO₄ x 0,6 = Mo



Instrucciones para la determinación de Molibdato

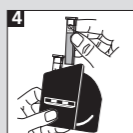
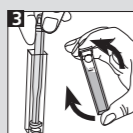
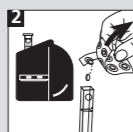
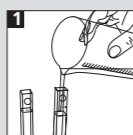
CHECKIT®Disc	Campo de medición	Número de pedido
Molibdato	0 - 100 mg/l MoO ₄	14 62 90

Precisión de discos: ± 5 % del valor final

Tabletas	Número de pedido
MOLYBDATE No. 1 HR	51 30 60
MOLYBDATE No. 2 HR	51 30 70

Molibdato (MOLYBDATE No.1 / No.2 HR-tableta)

- 1 Llenar ambas cubetas con la prueba hasta la marca de 10 ml.
- 2 Colocar una cubeta como ensayo en blanco en el compartimento izquierdo del Comparator. Añadir a la segunda cubeta una tableta MOLYBDATE No.1 HR. Machacarla con una varilla.
- 3 Para la determinación, añadir directamente del papel de aluminio, una tableta MOLYBDATE No. 2 HR en el compartimento de afuera. Machacarla con una varilla. Cerrarla con su tapa y moverlos para disolver las tabletas.
- 4 Colocar esta cubeta en el compartimento derecho.
- 5 Una vez realizada la igualación del color producido en la cubeta con el CHECKIT®Disc, leer el resultado de mg/l MoO₄.
MoO₄ x 1,3 = Na₂MoO₄
MoO₄ x 0,6 = Mo



DE Wichtig:

Die Küvette muss mit dem Punkt zum Betrachter im Messschacht positioniert werden. Um höchste Genauigkeit zu gewährleisten, Farbabgleich immer gegen Tagesnordlicht durchführen. Küvetten müssen nach jeder Bestimmung gründlich gespült werden. CHECKIT®Disc lichtgeschützt / dunkel lagern.

GB Important:

Place the cell facing the mark (point) in the compartment. It is essential to rinse the cells thoroughly after each test. To obtain maximum accuracy view and match colour against north day light always. Store CHECKIT®Disc in the dark.

FR Important:

La cuve doit être positionnée de façon à ce que le point concorde avec le repère de la chambre de mesure.

Pour assurer la plus grande exactitude, faire concorder la couleur avec le CHECKIT®Disc en tenant le comparateur face à la lumière.

Les cuves doivent être bien nettoyées après chaque mesure. Stocker CHECKIT®Disc dans un endroit sombre.

IT Importante:

La cuvetta deve essere posizionata nel pozzetto di misurazione con il punto verso l'osservatore.

Per garantire la massima precisione eseguire sempre la compensazione del colore contro la luce del giorno.

Le cuvette devono essere sempre lavate accuratamente in seguito ad ogni determinazione. Conservare CHECKIT®Disc oscuro.

ES Importante:

Posicionar la cubeta en el compartimento de tal forma, que el punto se encuentre dirigido hacia el usuario.

Para garantizar una exactitud máxima, realizar el ajuste cromático siempre con luz diurna. Las cubetas se deberán de limpiar y enjuagar minuciosamente después de cada determinación. Almacene CHECKIT®Disc obscuro.

DE Wichtig:

Die Küvette muss mit dem Punkt zum Betrachter im Messschacht positioniert werden. Um höchste Genauigkeit zu gewährleisten, Farbabgleich immer gegen Tagesnordlicht durchführen. Küvetten müssen nach jeder Bestimmung gründlich gespült werden. CHECKIT®Disc lichtgeschützt / dunkel lagern.

GB Important:

Place the cell facing the mark (point) in the compartment. It is essential to rinse the cells thoroughly after each test. To obtain maximum accuracy view and match colour against north day light always. Store CHECKIT®Disc in the dark.

FR Important:

La cuve doit être positionnée de façon à ce que le point concorde avec le repère de la chambre de mesure.

Pour assurer la plus grande exactitude, faire concorder la couleur avec le CHECKIT®Disc en tenant le comparateur face à la lumière.

Les cuves doivent être bien nettoyées après chaque mesure. Stocker CHECKIT®Disc dans un endroit sombre.

IT Importante:

La cuvetta deve essere posizionata nel pozzetto di misurazione con il punto verso l'osservatore.

Per garantire la massima precisione eseguire sempre la compensazione del colore contro la luce del giorno.

Le cuvette devono essere sempre lavate accuratamente in seguito ad ogni determinazione. Conservare CHECKIT®Disc oscuro.

ES Importante:

Posicionar la cubeta en el compartimento de tal forma, que el punto se encuentre dirigido hacia el usuario.

Para garantizar una exactitud máxima, realizar el ajuste cromático siempre con luz diurna. Las cubetas se deberán de limpiar y enjuagar minuciosamente después de cada determinación. Almacene CHECKIT®Disc obscuro.

Other available tests	Range	Other available tests	Range
Aluminium	0 - 0.3 mg/l Al	Iron TPTZ	0 - 1,8 mg/l Fe
Ammonia	0 - 1 mg/l N	Manganese LR	0.1 - 0.7 mg/l Mn
Ammonia vario	0 - 0.5 mg/l N	Manganese VLR*	0.02 - 0.2 mg/l Mn
Bromine	0.5 - 5 mmol/l	Molybdate	0 - 100 mg/l MoO ₄
Chlorine	0 - 1 mg/l Cl ₂	Nitrate LR	0 - 1 mg/l N
free, combined,	0.1 - 2 mg/l Cl ₂	Nitrate HR	10 - 100 mg/l NO ₃
total	0 - 4 mg/l Cl ₂	Nitrite LR	0 - 0.5 mg/l N
Chlorine*	0.02 - 0.3 mg/l Cl ₂	Nitrite LR vario	0 - 0.3 mg/l N
Chlorine Dioxide*	0.01 - 0.2 mg/l ClO ₂	Ozone (DPD)	0 - 0.7 mg/l O ₃
Chlorine HR (total)	10 - 300 mg/l Cl ₂	Ozone (DPD)	0 - 1.0 mg/l O ₃
Chlor vario	0 - 3.5 mg/l Cl	pH	5.2 - 6.8 pH, 6.0 - 7.6 pH, 6.5 - 8.4 pH, 4 - 10 pH
Copper (Cu²⁺)	0 - 1 mg/l Cu	Phosphate LR	0 - 4 mg/l PO ₄
Copper LR*	0 - 1 mg/l Cu	Phosphate HR	0 - 80 mg/l PO ₄
(free + total)		Phosphate vario	0 - 2.5 mg/l PO ₄
Copper HR	0 - 5 mg/l Cu	Säurekapazität Ks4.3	0.5 - 5 mmol/l
(free + total)		Silica LR	0.25 - 4 mg/l SiO ₂
Copper LR vario*	0 - 1 mg/l Cu	Silica vario	0 - 100 mg/l SiO ₂
(free)		Silica VLR*	0 - 1 mg/l SiO ₂
Copper HR vario	0 - 5 mg/l Cu	Sodium Hypochlorite	2 - 18 % NaOCl
(free)		Sulfite LR	0.5 - 10 mg/l SO ₃ ²⁻
DEHA	0 - 0.5 mg/l DEHA	Total Alkalinity	20-240 mg/l CaCO ₃
Fluoride	0.2 - 2 mg/l F	Zinc	0 - 1 mg/l Zn
Iron LR	0.05 - 1 mg/l Fe		
Iron HR	0 - 10 mg/l Fe		

*Only with CHECKIT®Comparator D55 with mirror optics

Update: www.tintometer.de
No.: 00387075

Technical changes without notice
Printed in Germany 08/04

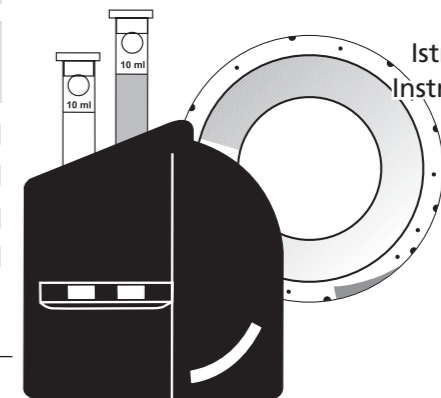
Other available tests	Range	Other available tests	Range
Aluminium	0 - 0.3 mg/l Al	Iron TPTZ	0 - 1,8 mg/l Fe
Ammonia	0 - 1 mg/l N	Manganese LR	0.1 - 0.7 mg/l Mn
Ammonia vario	0 - 0.5 mg/l N	Manganese VLR*	0.02 - 0.2 mg/l Mn
Bromine	0.5 - 5 mmol/l	Molybdate	0 - 100 mg/l MoO ₄
Chlorine	0 - 1 mg/l Cl ₂	Nitrate LR	0 - 1 mg/l N
free, combined,	0.1 - 2 mg/l Cl ₂	Nitrate HR	10 - 100 mg/l NO ₃
total	0 - 4 mg/l Cl ₂	Nitrite LR	0 - 0.5 mg/l N
Chlorine*	0.02 - 0.3 mg/l Cl ₂	Nitrite LR vario	0 - 0.3 mg/l N
Chlorine Dioxide*	0.01 - 0.2 mg/l ClO ₂	Ozone (DPD)	0 - 0.7 mg/l O ₃
Chlorine HR (total)	10 - 300 mg/l Cl ₂	Ozone (DPD)	0 - 1.0 mg/l O ₃
Chlor vario	0 - 3.5 mg/l Cl	pH	5.2 - 6.8 pH, 6.0 - 7.6 pH, 6.5 - 8.4 pH, 4 - 10 pH
Copper (Cu²⁺)	0 - 1 mg/l Cu	Phosphate LR	0 - 4 mg/l PO ₄
Copper LR*	0 - 1 mg/l Cu	Phosphate HR	0 - 80 mg/l PO ₄
(free + total)		Phosphate vario	0 - 2.5 mg/l PO ₄
Copper HR	0 - 5 mg/l Cu	Säurekapazität Ks4.3	0.5 - 5 mmol/l
(free + total)		Silica LR	0.25 - 4 mg/l SiO ₂
Copper LR vario*	0 - 1 mg/l Cu	Silica vario	0 - 100 mg/l SiO ₂
(free)		Silica VLR*	0 - 1 mg/l SiO ₂
Copper HR vario	0 - 5 mg/l Cu	Sodium Hypochlorite	2 - 18 % NaOCl
(free)		Sulfite LR	0.5 - 10 mg/l SO ₃ ²⁻
DEHA	0 - 0.5 mg/l DEHA	Total Alkalinity	20-240 mg/l CaCO ₃
Fluoride	0.2 - 2 mg/l F	Zinc	0 - 1 mg/l Zn
Iron LR	0.05 - 1 mg/l Fe		
Iron HR	0 - 10 mg/l Fe		

*Only with CHECKIT®Comparator D55 with mirror optics

Update: www.tintometer.de
No.: 00387075

Technical changes without notice
Printed in Germany 08/04

CHECKIT®Comparator

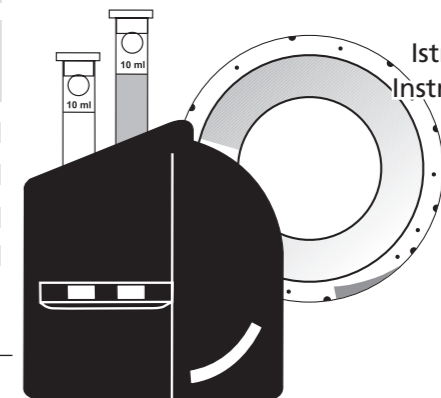


Bedienungsanleitung **DE**
Instruction Manual **GB**
Mode d'emploi **FR**
Istruzioni per l'uso **IT**
Instrucciones de uso **ES**

Molybdat
Molybdate
Molybdate
Molibdato
Molibdato

Tablet Reagent

CHECKIT®Comparator



Bedienungsanleitung **DE**
Instruction Manual **GB**
Mode d'emploi **FR**
Istruzioni per l'uso **IT**
Instrucciones de uso **ES**

Molybdat
Molybdate
Molybdate
Molibdato
Molibdato

Tablet Reagent

Anleitung zur Bestimmung von Molybdat

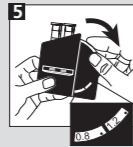
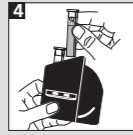
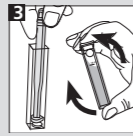
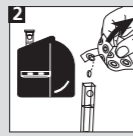
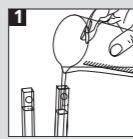
CHECKIT®Disc Messbereich Bestell-Nr.
Molybdate 0 - 100 mg/l MoO₄ 14 62 90

Genauigkeit: ± 5 % vom Messbereichsendwert

Tabletten Bestell-Nr. per 100 Stück
MOLYBDATE No. 1 HR 51 30 60
MOLYBDATE No. 2 HR 51 30 70

Molybdate (MOLYBDATE No. 1 / No. 2 HR-Tablette)

- 1 Beide Küvetten mit der Probe bis zur 10 ml-Marke füllen.
- 2 Eine Küvette als Blindprobe in die linke Kammer des Comparators stellen. In die andere Küvette eine MOLYBDATE-No.1-HR-Tablette geben.
- 3 Die Tablette mit Rührstab zerdrücken. Danach eine MOLYBDATE-No.2-HR-Tablette zugeben. Die Tablette zerdrücken, Küvette verschließen. Tabletten durch Umschwenken auflösen.
- 4 Die zweite Küvette in die rechte Kammer des Comparators stellen.
- 5 Nach dem Abgleich mit der CHECKIT®Disc wird das Ergebnis in mg/l MoO₄ abgelesen.
MoO₄ x 1,3 = Na₂MoO₄
MoO₄ x 0,6 = Mo



Anleitung zur Bestimmung von Molybdat

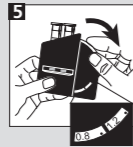
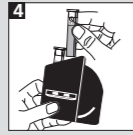
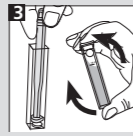
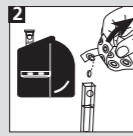
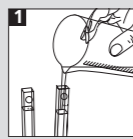
CHECKIT®Disc Messbereich Bestell-Nr.
Molybdate 0 - 100 mg/l MoO₄ 14 62 90

Genauigkeit: ± 5 % vom Messbereichsendwert

Tabletten Bestell-Nr. per 100 Stück
MOLYBDATE No. 1 HR 51 30 60
MOLYBDATE No. 2 HR 51 30 70

Molybdate (MOLYBDATE No. 1 / No. 2 HR-Tablette)

- 1 Beide Küvetten mit der Probe bis zur 10 ml-Marke füllen.
- 2 Eine Küvette als Blindprobe in die linke Kammer des Comparators stellen. In die andere Küvette eine MOLYBDATE-No.1-HR-Tablette geben.
- 3 Die Tablette mit Rührstab zerdrücken. Danach eine MOLYBDATE-No.2-HR-Tablette zugeben. Die Tablette zerdrücken, Küvette verschließen. Tabletten durch Umschwenken auflösen.
- 4 Die zweite Küvette in die rechte Kammer des Comparators stellen.
- 5 Nach dem Abgleich mit der CHECKIT®Disc wird das Ergebnis in mg/l MoO₄ abgelesen.
MoO₄ x 1,3 = Na₂MoO₄
MoO₄ x 0,6 = Mo



Instructions for the determination of Molybdate

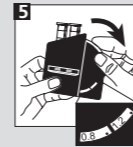
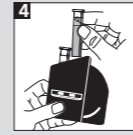
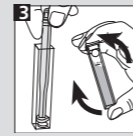
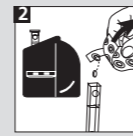
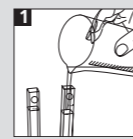
CHECKIT®Disc Measurement Range Order Code
Molybdate 0 - 100 mg/l MoO₄ 14 62 90

Accuracy: ± 5 % full scale

Tablets Order Code (per 100 pcs)
MOLYBDATE No. 1 HR 51 30 60
MOLYBDATE No. 2 HR 51 30 70

Molybdate (MOLYBDATE No.1 / No.2 HR- tablet)

- 1 Fill both cells to the 10 ml mark.
- 2 Place one cell in the left-hand compartment of the comparator as a blank. Add one MOLYBDATE-No.1 HR-tablet to the other cell.
- 3 Crush the tablet. Afterwards add one MOLYBDATE-No.2-HR tablet. Crush the tablet, close the cell with a lid. Swirl it until the tablet is dissolved.
- 4 Place this second cell in the right-hand compartment of the comparator.
- 5 Match the two colour fields against north day light and read off the result as mg/l MoO₄.
MoO₄ x 1,3 = Na₂MoO₄
MoO₄ x 0,6 = Mo



Instructions for the determination of Molybdate

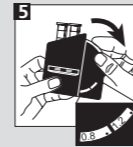
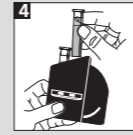
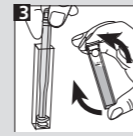
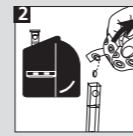
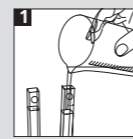
CHECKIT®Disc Measurement Range Order Code
Molybdate 0 - 100 mg/l MoO₄ 14 62 90

Accuracy: ± 5 % full scale

Tablets Order Code (per 100 pcs)
MOLYBDATE No. 1 HR 51 30 60
MOLYBDATE No. 2 HR 51 30 70

Molybdate (MOLYBDATE No.1 / No.2 HR- tablet)

- 1 Fill both cells to the 10 ml mark.
- 2 Place one cell in the left-hand compartment of the comparator as a blank. Add one MOLYBDATE-No.1 HR-tablet to the other cell.
- 3 Crush the tablet. Afterwards add one MOLYBDATE-No.2-HR tablet. Crush the tablet, close the cell with a lid. Swirl it until the tablet is dissolved.
- 4 Place this second cell in the right-hand compartment of the comparator.
- 5 Match the two colour fields against north day light and read off the result as mg/l MoO₄.
MoO₄ x 1,3 = Na₂MoO₄
MoO₄ x 0,6 = Mo



Mode d'emploi pour la détermination du Molybdate

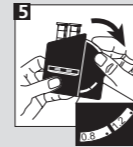
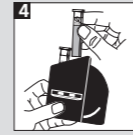
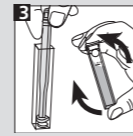
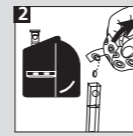
CHECKIT®Disc Plage de mesure Référence de commande
Molybdate 0 - 100 mg/l MoO₄ 14 62 90

Precision de la mesure: ± 5 % de valeur plafond de la plage de mesure

Reagent (pour 100 Tests) Référence de commande
MOLYBDATE No. 1 HR 51 30 60
MOLYBDATE No. 2 HR 51 30 70

Molybdate (MOLYBDATE No.1 / No.2 HR-pastille)

- 1 Remplir les deux cuves avec l'échantillon jusqu'à la marque 10 ml.
- 2 Placer une cuve dans la chambre de mesure de gauche du comparateur (solution témoin). Ajouter une pastille de MOLYBDATE No.1 HR dans l'autre cuve.
- 3 Ecraser la pastille. Puis ajouter une pastille d'MOLYBDATE No. 2 HR et écraser la pastille. Fermer la cuvette avec son couvercle. Dissoudre la pastille en agitant la cuvette.
- 4 Placer celle-ci dans la chambre de mesure de droite.
- 5 Faire concorder la couleur obtenue avec le CHECKIT®Disc et lire le résultat en mg/l MoO₄.
MoO₄ x 1,3 = Na₂MoO₄
MoO₄ x 0,6 = Mo



Mode d'emploi pour la détermination du Molybdate

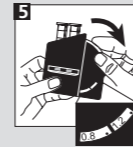
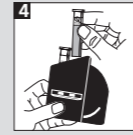
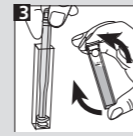
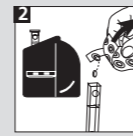
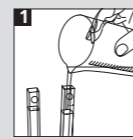
CHECKIT®Disc Plage de mesure Référence de commande
Molybdate 0 - 100 mg/l MoO₄ 14 62 90

Precision de la mesure: ± 5 % de valeur plafond de la plage de mesure

Reagent (pour 100 Tests) Référence de commande
MOLYBDATE No. 1 HR 51 30 60
MOLYBDATE No. 2 HR 51 30 70

Molybdate (MOLYBDATE No.1 / No.2 HR-pastille)

- 1 Remplir les deux cuves avec l'échantillon jusqu'à la marque 10 ml.
- 2 Placer une cuve dans la chambre de mesure de gauche du comparateur (solution témoin). Ajouter une pastille de MOLYBDATE No.1 HR dans l'autre cuve.
- 3 Ecraser la pastille. Puis ajouter une pastille d'MOLYBDATE No. 2 HR et écraser la pastille. Fermer la cuvette avec son couvercle. Dissoudre la pastille en agitant la cuvette.
- 4 Placer celle-ci dans la chambre de mesure de droite.
- 5 Faire concorder la couleur obtenue avec le CHECKIT®Disc et lire le résultat en mg/l MoO₄.
MoO₄ x 1,3 = Na₂MoO₄
MoO₄ x 0,6 = Mo



Istruzioni per la determinazione di Molibdato

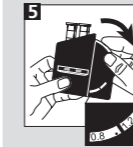
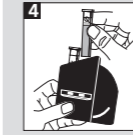
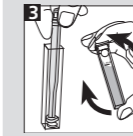
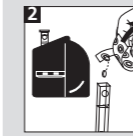
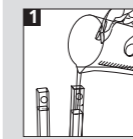
Disc Campo di misurazione Cod. art.
Molibdato 0 - 100 mg/l MoO₄ 14 62 90

Precisione di dischi: +/- 5% del valore finale.

Power Pack Cod. art. ogni 100 pezzi
MOLYBDATE No. 1 HR 51 30 60
MOLYBDATE No. 2 HR 51 30 70

Molibdato (MOLYBDATE No.1 / No.2-compresse)

- 1 Riempire le due cuvette con il campione fino alla tacca 10 ml.
- 2 Porre una cuvetta come bianco nella camera a sinistra del comparatore. Introdurre una compressa MOLYBDATE No.1 HR nell'altra cuvetta.
- 3 Frantumarla con un agitatore pulito. Introdurre una compressa MOLYBDATE No.2 e frantumarla con un agitatore pulito. Chiudere con il coperchio.
- 4 Far sciogliere la compressa capovolgendo la cuvetta che poi verrà inserita nella camera a destra.
- 5 In seguito alla compensazione con il CHECKIT®Disc il risultato viene letto come mg/l MoO₄.
MoO₄ x 1,3 = Na₂MoO₄
MoO₄ x 0,6 = Mo



Istruzioni per la determinazione di Molibdato

Disc Campo di misurazione Cod. art.
Molibdato 0 - 100 mg/l MoO₄ 14 62 90

Precisione di dischi: +/- 5% del valore finale.

Power Pack Cod. art. ogni 100 pezzi
MOLYBDATE No. 1 HR 51 30 60
MOLYBDATE No. 2 HR 51 30 70

Molibdato (MOLYBDATE No.1 / No.2-compresse)

- 1 Riempire le due cuvette con il campione fino alla tacca 10 ml.
- 2 Porre una cuvetta come bianco nella camera a sinistra del comparatore. Introdurre una compressa MOLYBDATE No.1 HR nell'altra cuvetta.
- 3 Frantumarla con un agitatore pulito. Introdurre una compressa MOLYBDATE No.2 e frantumarla con un agitatore pulito. Chiudere con il coperchio.
- 4 Far sciogliere la compressa capovolgendo la cuvetta che poi verrà inserita nella camera a destra.
- 5 In seguito alla compensazione con il CHECKIT®Disc il risultato viene letto come mg/l MoO₄.
MoO₄ x 1,3 = Na₂MoO₄
MoO₄ x 0,6 = Mo

