

CHECKIT[®] Comparator

Bedienungsanleitung (D)

Instruction Manual (GB)

Mode d'emploi (FR)

Istruzioni per l'uso (I)

Instrucciones de uso (ES)

Nitrat LR

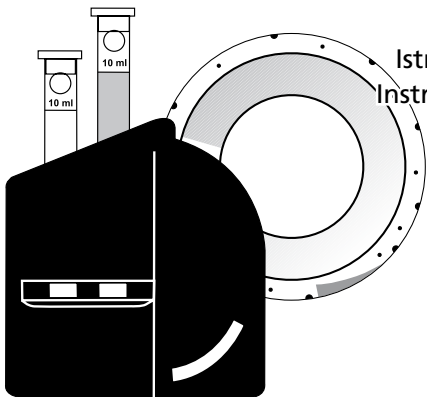
Nitrate LR

Nitrate LR

Nitrato LR

Nitrato LR

Tablet Reagent



Anleitung zur Bestimmung von Nitrat LR

CHECKIT®Disc

Messbereich

Bestell-Nr.

Nitrat LR

0 - 1 mg/l N

14 63 10

Genauigkeit: ± 5 % vom Messbereichsendwert

Tabletten

Bestell-Nr. per 100 Stück

NITRATE-Test Powder

46 52 30

NITRATE-TEST Tablets

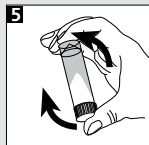
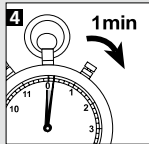
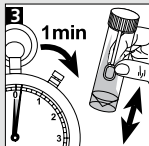
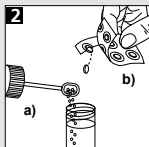
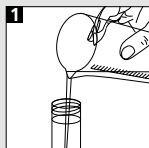
50 28 10

NITRITE LR

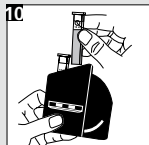
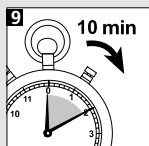
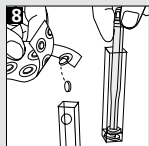
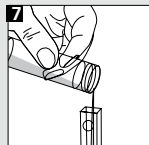
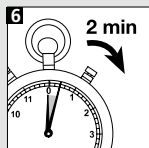
51 23 10

Nitrat LR (NITRATE-Test Powder/NITRITE LR-Test Tablets/ NITRATE LR)

- 1 Das Nitrat-Teströhrchen wird bis zur 20 ml Marke mit Probe gefüllt.
- 2 Dem Teströhrchen werden 1 gestrichener Meßlöffel voll Nitrat-Testpulver und eine Nitrate-Test-Tablette zugegeben.
Die Tablette nicht zerdrücken!
- 3 Deckel aufschrauben und 1 Minute lang gut schütteln.
- 4 Danach ist eine Wartezeit von **1 Minute** erforderlich. Es wird ein Ausflocken des Nitrate-Test Powders beobachtet.
- 5 Das Teströhrchen wird zwei- bis dreimal umgekehrt, um die Flockung zu vervollständigen.



- ⑥ Danach ist eine weitere Wartezeit von **2 Minuten** erforderlich, damit sich alles NITRATE-TEST Powder am Boden absetzt und die darüberstehende Probe klar wird.
- ⑦ Eine Küvette wird bis zur 10 ml Marke vorsichtig mit dem klaren Oberstand aus dem Teströhrchen gefüllt. NITRATE-Test Powder darf dabei nicht in die Küvette überführt werden.
- ⑧ Dieser Küvette wird eine Nitrite LR-Tablette zugegeben, die mit dem Rührstab zerdrückt und gut vermischt wird.
- ⑨ Danach ist eine Wartezeit von **10 Minuten** zur vollen Farbentwicklung erforderlich.
- ⑩ Die behandelte Probe wird in die rechte Kammer des Comparators gestellt.
Eine zweite Küvette wird bis zur 10 ml Marke mit unbehandelter Probe gefüllt und in die linke Kammer des Comparators gestellt. Nach dem Abgleich mit der CHECKIT®Disc wird das Ergebnis in mg/l N abgelesen.



Instructions for the determination of Nitrate LR

CHECKIT®Disc

Nitrate LR

Measurement Range Order Code

0 - 1 mg/l N

14 63 10

Accuracy:

± 5 % full scale

Tablets

NITRATE-Test Powder

NITRATE-TEST Tablets

NITRITE LR

Order Code (per 100 pcs)

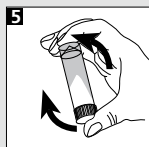
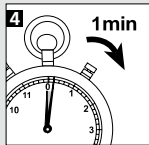
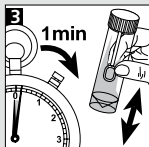
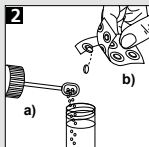
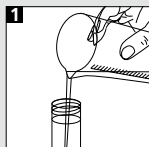
46 52 30

50 28 10

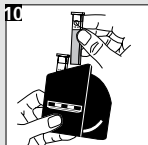
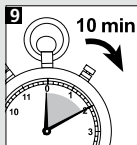
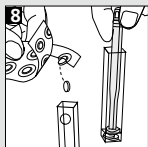
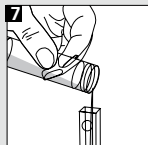
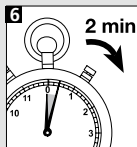
51 23 10

Nitrate LR (NITRATE-Test Powder/NITRITE LR-Test Tablets/NITRATE LR)

- 1 Fill the Nitrate Test Tube to the 20 ml mark.
- 2 Add one level spoon full NITRATE-Test Powder and a NITRATE-Test Tablet to the Test Tube.
Don't crush the the tablet!
- 3 Close it with a lid and shake for **1 minute**.
- 4 Allow **1 minute** for the flocculation of the NITRATE-Test Powder.
- 5 Invert the Test Tube two or three times to complete the flocculation.



- 6** Allow **2 minutes** time for complete sediment of NITRATE-Test Powder.
- 7** Fill one cell carefully to the 10 ml mark with the clear solution of the Test Tube.
- 8** Add one NITRITE-LR Tablet to this cell, crush it and mix it with a clean stirring rod.
- 9** Wait **10 Minutes** for complete colour reaction.
- 10** Place this cell in the right-hand compartement of the comparator. Fill a second cell to the the 10 ml mark and place it in the left-hand compartement of the comparator. Match the two colour fields against north day light and read off the result as mg/l N.



Mode d'emploi pour la détermination du Nitrate LR

CHECKIT®Disc

Plage de mesure

Référence de commande

Nitrate LR

0 - 1 mg/l N

14 63 10

Precision de la mesure:

± 5 % de la valeur plafond de la plage de mesure

Pastilles

Référence de commande pour 100 pastilles

NITRATE-Test Powder

46 52 30

NITRATE-TEST Tablets

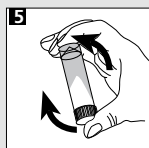
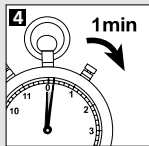
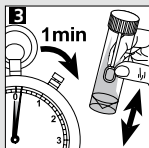
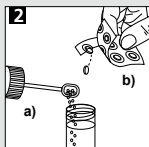
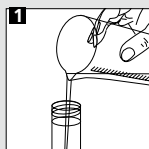
50 28 10

NITRITE LR

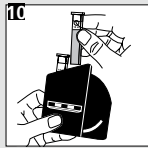
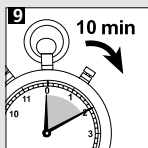
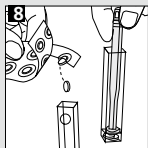
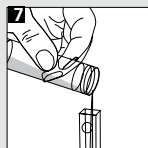
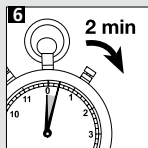
51 23 10

Nitrate LR (NITRATE-Test Powder/NITRITE LR-Test Tablets/NITRATE LR)

- 1 Remplir le Nitrate Test Tube avec l'échantillon jusqu'à la marque 20 ml.
- 2 Ajouter une cuillerée pleine de NITRATE-Test Powder et une pastille de NITRATE-Test dans le Test Tube.
N'écrasez pas la pastille!
- 3 Refermer la cuve et agiter la cuve pendant **1 minute**.
- 4 Attendre un temps de réaction de **1 minute**. On observe alors une floculation du NITRATE-Test Powder.
- 5 Agiter le Test Tube deux ou trois fois pour compléter la floculation.



- 6 Attendre un temps de réaction de **2 minutes** pour une floculation complète.
- 7 Remplir la cuve avec précaution avec la solution non trouble du Test Tube jusqu'à la marque 10 ml.
- 8 Ajouter une pastille de NITRITE-LR dans la cuve et écraser la pastille et mélanger bien.
- 9 Attendre **10 minutes** le développement complet de la couleur.
- 10 Placer la cuve dans la chambre de droite. Remplir l'autre cuve avec l'échantillon non traité jusqu'à la marque 10 ml et la placer dans la chambre de mesure de gauche. Faire concorder la couleur obtenue avec le CHECKIT® Disc et lire le résultat en mg/l N.



Istruzioni per la determinazione di Nitrate LR

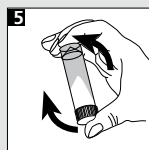
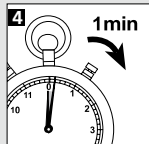
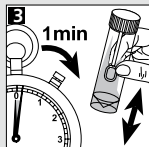
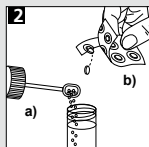
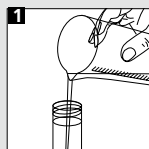
CHECKIT®Disc	Campo di misurazione	Cod. art.
Nitrate LR	0 - 1 mg/l N	14 63 10

Precisione di dischi: +/- 5% del valore finale.

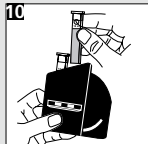
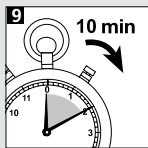
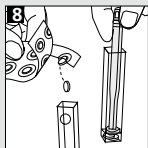
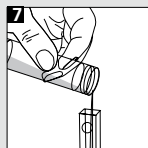
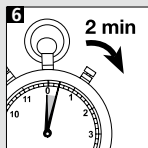
Compresse	Cod. art. ogni
100 pezzi	
NITRATE-Test Powder	46 52 30
NITRATE-TEST Tablets	50 28 10
NITRITE LR	51 23 10

Nitrate LR (NITRATE-Test Powder/NITRITE LR-Test Tablets/NITRATE LR)

- 1 Riempire le Nitrate Test Tube con il campione fino alla tacca 20 ml.
- 2 Introdurre un cucchiaino pieno di NITRATE-Test Powder e una compressa NITRATE-Test nell la Test Tube.
Non schiacci la compressa!
- 3 Chiudere con il coperchio e frantumarla con un agitatore di **1 minuto**.
- 4 Attendere un tempo di **1 minuto** per la reazione. Ci sarà flocculazione nella polvere NITRATE Test.
- 5 Invertisci el tubo due o tre volte per completare la flocculazione.



- 6** Attendere un tempo di **2 minuto** per la reazione per completare la flocculazione.
- 7** Riempire una cuvetta fino alla tacca 10 ml con il liquido chiaro della parte superiore dell tubo Nitrat.
- 8** Introdurre una compressa NITRITE-LR e frantumarla e miscela bene con un agitatore pulito.
- 9** Attendere un tempo di **10 minuto** per la reazione colorante.
- 10** Mette la cuvetta nella camera sinistra del comparatore. Riempire l'altra cuvetta con il campione non trattato fino alla tacca 10 ml e mette nella camera destra del comparatore. In seguito alla compensazione con il CHECKIT®Disc il risultato viene letto come mg/l N.



Instrucciones para la determinación de Nitrate LR

CHECKIT®Disc	Campo de medición	Número de pedido
Nitrate LR	0 - 1 mg/l N	14 63 10

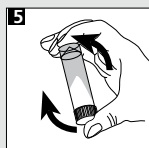
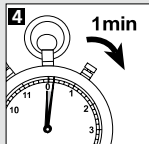
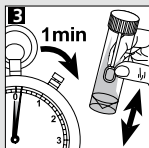
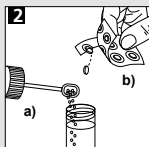
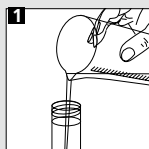
Precisión de discos: $\pm 5\%$ del valor final

Tabletas

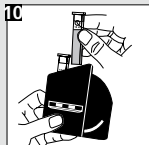
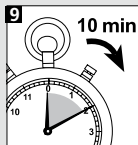
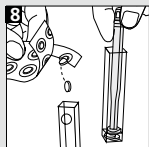
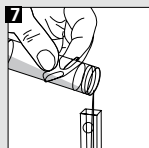
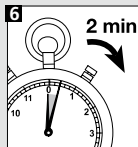
	Número de pedido
NITRATE-Test Powder	46 52 30
NITRATE-TEST Tablets	50 28 10
NITRITE LR	51 23 10

Nitrate LR (NITRATE-Test Powder/NITRITE LR-Test Tablets/NITRATE LR)

- 1 Llenar Nitrate Test Tube con la prueba hasta a la marca 20 ml.
- 2 Añadir una cuchara llena de NITRATE-Test Powder y una tableta NITRATE-Test a la Test Tube.
Non machacarla la tableta!
- 3 Cerrarla con su tapa y moverlos para disolver **1 minuto**.
- 4 Esperar **1 minutos** de tiempo de reacción. Hábra floculación en el polvo.
- 5 Invierta el tubo dos o tres veces para terminar la floculación.



- 6** Esperar **2 minutos** de tiempo de reacción para terminar la floculación.
- 7** Llenar la cubeta con la prueba hasta a la marca 10 ml. Con el líquido claro de la parte superior del tubo Nitrat.
- 8** Añadir una tableta NITRITE-LR a la cubeta y machacarla con una varilla.
- 9** Esperar 2 minutos de tiempo de reacción colórea!
- 10** Colocar esta cubeta en el compartimento derecho. Llenar la segunda cubeta con la prueba non tratada hasta a la marca de 10 ml y colocar la cubeta en el compartimento izquierdo. Una vez realizada la igualación del color producido en la cubeta con el CHECKIT®Disc, leer resultado de mg/l N.



Other available tests Range

Aluminium	0 - 0.3 mg/l Al
Ammonia	0 - 1 mg/l N
Ammonia vario	0 - 0.5 mg/l N
Bromine	0.5 - 5 mmol/l
Chlorine	0 - 1 mg/l Cl ₂
free, combined,	0.1 - 2 mg/l Cl ₂
total	0 - 4 mg/l Cl ₂
Chlorine*	0.02 - 0.3 mg/l Cl ₂
Chlorine Dioxide*	0.01 - 0.2 mg/l ClO ₂
Chlorine HR (total)	10 - 300 mg/l Cl ₂
Chlor vario	0 - 3.5 mg/l Cl ₂
Copper (Cu²⁺)	0 - 1 mg/l Cu
Copper LR*	0 - 1 mg/l Cu
(free + total)	
Copper HR	0 - 5 mg/l Cu
(free + total)	
Copper LR vario*	0 - 1 mg/l Cu
(free)	
Copper HR vario	0 - 5 mg/l Cu
(free)	
DEHA	0 - 0.5 mg/l DEHA
Fluoride	0.2 - 2 mg/l F
Iron LR	0.05 - 1 mg/l Fe

Other available tests Range

Iron HR	1 - 10 mg/l Fe
Iron TPTZ	0 - 1.8 mg/l Fe
Manganese LR	0.1 - 0.7 mg/l Mn
Manganese VLR*	0.02 - 0.2 mg/l Mn
Molybdate	0 - 100 mg/l MoO ₄
Nitrate LR	0 - 1 mg/l N
Nitrate HR	10 - 100 mg/l NO ₃
Nitrite LR	0 - 0.5 mg/l N
Nitrite LR vario	0 - 0.3 mg/l N
Ozone (DPD)	0 - 0.7 mg/l O ₃
pH	5.2 - 6.8 pH, 6.0 - 7.6 pH, 6.5 - 8.4 pH, 4 - 10 pH
Phosphate LR	0 - 4 mg/l PO ₄
Phosphate HR	0 - 80 mg/l PO ₄
Phosphat vario	0 - 2.5 mg/l PO ₄
Säurekapazität Ks4.3	0.5 - 5 mmol/l
Silica LR	0.25 - 4 mg/l SiO ₂
Silica vario	0 - 100 mg/l SiO ₂
Silica VLR*	0 - 1 mg/l SiO ₂
Sulfite LR	0.5 - 10 mg/l SO ₃ ²⁻
Total Alkalinity	20-240 mg/l CaCO ₃
Zinc	0 - 1 mg/l Zn

*Only with CHECKIT®Comparator D55 with mirror optics

Update: www.tintometer.de

No.: 00387085

Technical changes without notice

Printed in Germany 07/07