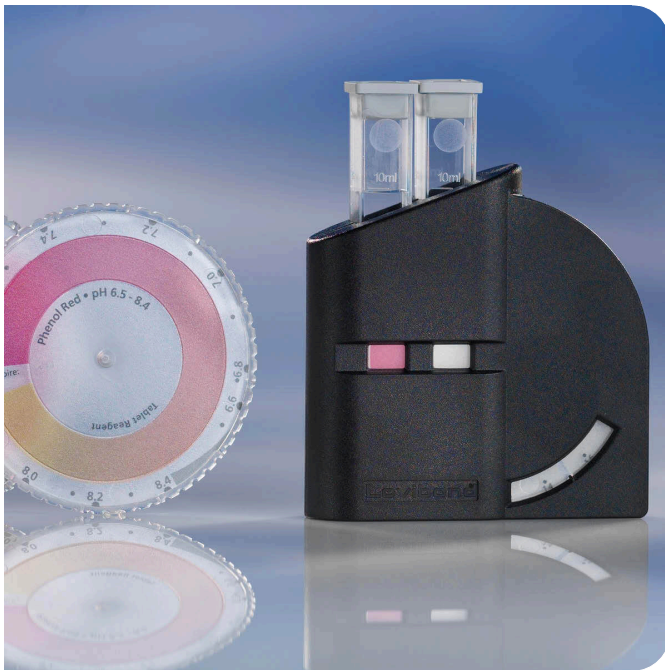


Lovibond® Water Testing Tintometer® Group



CHECKIT® Comparator Test Kit Chlorine DPD, 0-2 mg/L Cl₂

Testing with the color disc in many applications



- Supplied field-ready in a carrying case with reagents and accessories for 30 tests
- Wide range of parameters for a variety of applications
- Color discs have a continuous color gradient making it possible to achieve a direct color match - no need to extrapolate the result between two color standards

Part Number: 147040

Step-By-Step Instructions

Multi-lingual instructions provide an illustrated step-by-step explanation of how to conduct the test - ensuring that even "non-chemists" can achieve reliable and accurate measurements quickly.

Wide Variety of Parameters

Many parameters have multiple testing ranges and methods available. Additional testing parameters can be added by purchasing additional discs and reagents - utilize the same comparator housing for all of your test.

One Piece Comparator Housing

The rugged design of the one-piece comparator housing has no "moving pieces" that can become lost or broken. Simply slip the color disc into the housing until it clicks into place and you're ready to test. Test results are easily viewed in the results window.

Easy to View Results

The Diffuser Panel on the backside of the CHECKIT® Comparator housing helps to disperse light evenly among the sample and the blank tube. This makes it easier to achieve an accurate color match and helps the user visually compensate for turbidity in the sample.

Continuous Color Gradient

Color discs have a continuous color gradient making it possible to achieve a direct color match - no need to extrapolate the result between two color standards.

Industry

Chemical Industry | Food and Beverage Industry | Industries Others | Marine Industry | Municipalities | NGO | Oil and Gas | Pharmaceutical Industry | Pool Domestic | Pool Public | Pool Services | Power and Energy

Application

Cooling Water | Disinfection Control | Waste Water Treatment

CHECKIT® Comparator Test Kit Chlorine DPD, 0-2 mg/L Cl₂

CHECKIT® Comparator Test Kits are accurate, easy to use test kits for water analysis. Simply add the reagent to the sample cell, rotate the disc until the color matches the prepared water sample and read the concentration value.

Measuring Range

Test Name	Measuring Range	Chemical Method
Chlorine MR T	0 - 2 mg/L Cl ₂	DPD

Delivery Scope

- CHECKIT® Comparator with standard optics
- CHECKIT® Disc Chlorine DPD
- 30 tablet reagents DPD No.1
- 30 tablet reagents DPD No.3 Evo
- 2 plastic cuvettes 10 ml with lid
- Plastic stirring rod, length 10 cm
- Instruction manual
- Warranty information
- in case

Title	Part Number
Plastic cell, 13,5 mm path length, with grey lid, set of 10	145500
Plastic cell, 13,5 mm path length, with grey lid, set of 5	145505
Plastic cell, 13,5 mm path length, with grey lid, set of 100	145510
Cuvette stand for 10 round cuvettes Ø 16 mm	418957

Tintometer GmbH

Lovibond® Water Testing
Schleefstraße 8-12
44287 Dortmund
Tel.: +49 (0)231/94510-0
sales@lovibond.com
www.lovibond.com
Germany

The Tintometer Limited

Lovibond House
Sun Rise Way
Amesbury, SP4 7GR
Tel.: +44 (0)1980 664800
Fax: +44 (0)1980 625412
sales@lovibond.uk
www.lovibond.com
UK

Tintometer China

9F, SOHO II C.
No.9 Guanghualu,
Chaoyang District,
Beijing, 100020
Customer Care China Tel.: 4009021628
Tel.: +86 10 85251111 Ext. 330
Fax: +86 10 85251001
chinaoffice@tintometer.com
www.lovibond.com
China

Tintometer South East Asia

Unit B-3-12, BBT One Boulevard,
Lebuh Nilam 2, Bandar Bukit Tinggi,
Klang, 41200, Selangor D.E
Tel.: +60 (0)3 3325 2285/6
Fax: +60 (0)3 3325 2287
lovibond.asia@tintometer.com
www.lovibond.com
Malaysia

Tintometer Brazil

Caixa Postal: 271
CEP: 13201-970
Jundiaí – SP
Tel.: +55 (11) 3230-6410
sales@lovibond.us
www.lovibond.com.br
Brazil

Tintometer Inc.

6456 Parkland Drive
Sarasota, FL 34243
Tel: 941.756.6410
Fax: 941.727.9654
sales@lovibond.us
www.lovibond.us
USA

Tintometer India Pvt. Ltd.

Door No: 7-2-C-14, 2nd, 3rd & 4th Floor
Sanathnagar Industrial Estate,
Hyderabad, 500018
Telangana
Tel: +91 (0) 40 23883300
Toll Free: 1 800 599 3891/ 3892
indiaoffice@lovibond.in
www.lovibondwater.in
India

Tintometer Spain

Postbox: 24047
08080 Barcelona
Tel.: +34 661 606 770
sales@tintometer.es
www.lovibond.com
Spain