

Sulphate T

M355

5 - 100 mg/L SO₄²⁻

Bariumsulphate Turbidity

Instrument specific information

The test can be performed on the following devices. In addition, the required cuvette and the absorption range of the photometer are indicated.

Instrument Type	Cuvette	λ	Measuring Range
MD 600, MD 610, MD 640, MultiDirect, PM 620, PM 630, XD 7000, XD 7500	ø 24 mm	610 nm	5 - 100 mg/L SO ₄ ²⁻

Material

Required material (partly optional):

Reagents	Packaging Unit	Part Number
Sulfate Turbidity	Tablet / 100	515450BT
Sulfate Turbidity	Tablet / 250	515451BT

Application List

- Waste Water Treatment
- Cooling Water
- Drinking Water Treatment
- Raw Water Treatment

Notes

1. Sulphate causes a finely distributed turbidity with a milky appearance.





Determination of Sulphate with Tablet

Select the method on the device.

For this method, a ZERO measurement does not have to be carried out every time on the following devices: XD 7000, XD 7500



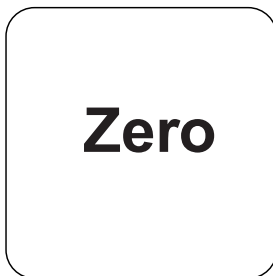
Fill 24 mm vial with **10 mL sample**.



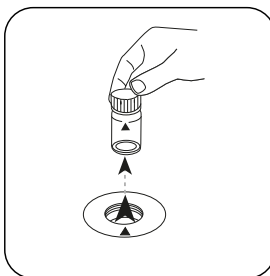
Close vial(s).



Place **sample vial** in the sample chamber. Pay attention to the positioning.

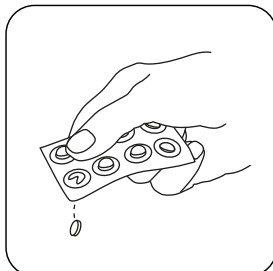


Press the **ZERO** button.

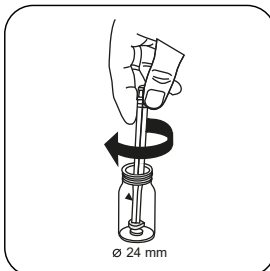


Remove the vial from the sample chamber.

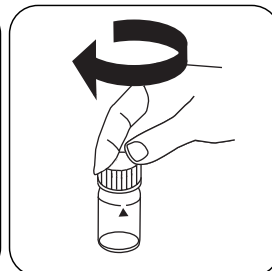
For devices that require **no ZERO measurement**, start here.



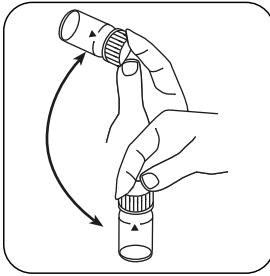
Add **SULFATE T tablet**.



Crush tablet(s) by rotating slightly.



Close vial(s).



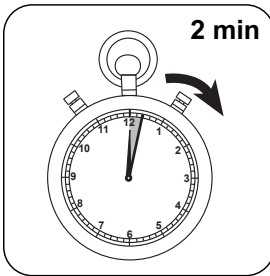
Dissolve tablet(s) by inverting.



Place **sample vial** in the sample chamber. Pay attention to the positioning.

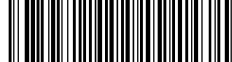


Press the **TEST** (XD: **START**) button.



Wait for **2 minute(s) reaction time**.

Once the reaction period is finished, the measurement takes place automatically. The result in mg/L Sulphate appears on the display.



Chemical Method

Bariumsulphate Turbidity

Appendix

Calibration function for 3rd-party photometers

$$\text{Conc.} = a + b \cdot \text{Abs} + c \cdot \text{Abs}^2 + d \cdot \text{Abs}^3 + e \cdot \text{Abs}^4 + f \cdot \text{Abs}^5$$

	∅ 24 mm	□ 10 mm
a	$3.70245 \cdot 10^0$	$3.70245 \cdot 10^0$
b	$1.39439 \cdot 10^{+2}$	$2.99793 \cdot 10^{+2}$
c		
d		
e		
f		

Derived from

DIN ISO 15923-1 D49