

**Chlorine Dioxide LR****56I700220****0.16 - 12 mg/L ClO<sub>2</sub>****Material**

<b>Reagents</b>	<b>Packaging Unit</b>	<b>Part Number</b>
Chlorine Dioxide Buffer CDO1	65 mL	56L033965
Chlorine Dioxide Titrant CDO2A	65 mL	56L150165

The following accessories are required.

<b>Accessories</b>	<b>Packaging Unit</b>	<b>Part Number</b>
Syringe, plastic, 20 mL	1 pc.	56A006501
Titration jar with cap, plastic, 250 mL	1 pc.	56A010501

**Application List**

- Cooling Water

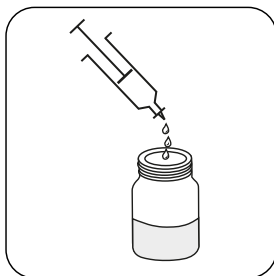
**Notes**

1. Colours may vary depending on sample and test conditions.
2. Acidic samples must be neutralised prior to testing.

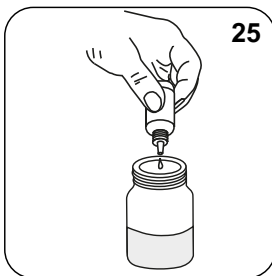
## Sampling

Select the sample volume from the table according to the expected measuring range and read off the factor to calculate the result.

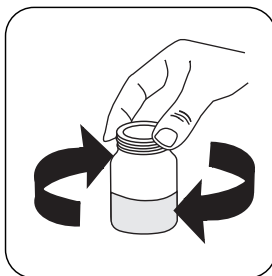
<b>Expected Range</b>	<b>Titrant used</b>	<b>Sample Size</b>	<b>Factor</b>
0.16-0.48 mg/L	Chlorine Dioxide Titrant CDO2A	250 mL	0.02
0.2-0.6 mg/L	Chlorine Dioxide Titrant CDO2A	200 mL	0.025
0.4-1.2 mg/L	Chlorine Dioxide Titrant CDO2A	100 mL	0.05
0.8-2.4 mg/L	Chlorine Dioxide Titrant CDO2A	50 mL	0.1
1.0-3.0 mg/l	Chlorine Dioxide Titrant CDO2A	40 mL	0.125
2.0-6.0 mg/L	Chlorine Dioxide Titrant CDO2A	20 mL	0.25
4.0-12 mg/L	Chlorine Dioxide Titrant CDO2A	10 mL	0.5



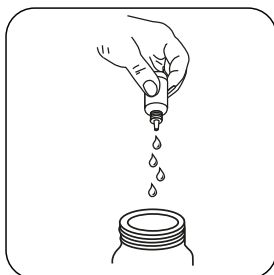
**Attention!** Select the appropriate sample volume according to the instructions in the chapter Sampling.



Add **25 drops Chlorine Dioxide Buffer CDO1**.

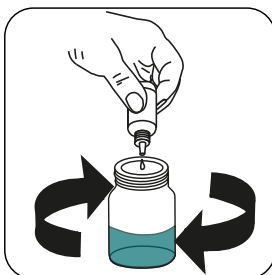


Swirl to mix.

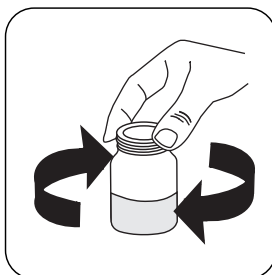


**Attention!** Record the number of drops that will be added.

**Note:** Make sure to swirl the jar after adding each drop!



Add **Chlorine Dioxide Titrant CDO2A** drop by drop to the sample until colouration turns from **colourless/pale yellow to blue/green**.



Swirl to mix. Allow 5 seconds between each addition.

**Calculate test result:** Chlorine Dioxide (as  $\text{ClO}_2$ ) mg/L = Number of drops x factor (see table)