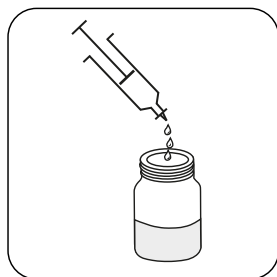
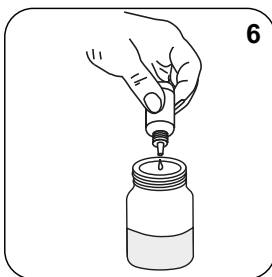


7 - 14 pH ; 1 - 300 mg/L Cl<sub>2</sub> ; 10 - 200 mg/  
L Cl<sub>2</sub>

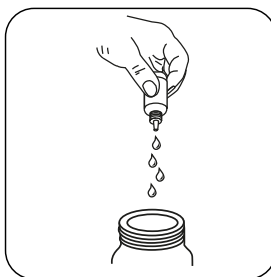




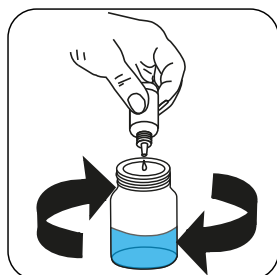
**Attention!** Select the appropriate sample volume according to the instructions in the chapter Sampling.



Add **6 drops Free Chlorine Buffer FCL1**. **Note: Add 10 drops when hardness of sample is greater than 400 mg/l (as CaCO<sub>3</sub>).**



**Attention!** Record the number of drops that will be added. **Note:** Make sure to swirl the jar after adding each drop!



Add **Chlorine Free LR Titrant FCL2 or Chlorine Free HR Titrant FCL3** drop by drop to the sample until colouration turns from **colourless/pale yellow to blue**.

**Calculate test result: Free Chlorine (as Cl<sub>2</sub>) mg/L = Number of drops x factor (see table)**