

Carbon Dioxide**56I700170****10 - 150 mg/L CaCO₃****Material**

Reagents	Packaging Unit	Part Number
Acidity / Alkalinity P Indicator PA1	65 mL	56L013565
Carbon Dioxide LR Titrant CDX2	65 mL	56L091065

The following accessories are required.

Accessories	Packaging Unit	Part Number
Syringe, plastic, 20 mL	1 pc.	56A006501
Titration jar with cap, plastic, 60 mL	1 pc.	56A006701

Application List

- Cooling Water

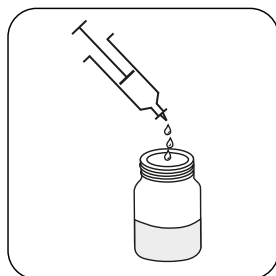
Notes

1. Colours may vary depending on sample and test conditions.
2. ppm = mg/L

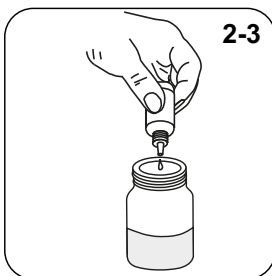
Sampling

Select the sample volume from the table according to the expected measuring range and read off the factor to calculate the result.

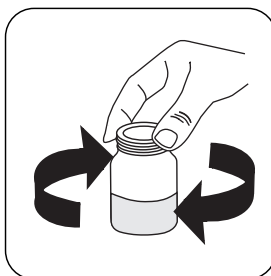
Expected Range	Titrant used	Sample Size	Factor
10-30 mg/L	Carbon Dioxide LR Titrant CDX2	40 mL	1
25-75 mg/L	Carbon Dioxide LR Titrant CDX2	20 mL	2.5
50-150 mg/L	Carbon Dioxide LR Titrant CDX2	10 mL	5



Attention! Select the appropriate sample volume according to the instructions in the chapter Sampling.



Add **2-3 drops Acidity / Alkalinity P Indicator PA1.**



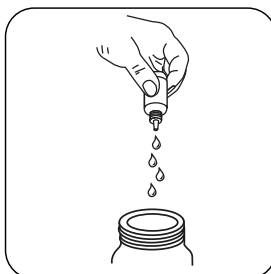
Swirl to mix.



If sample colour turns pink, report the Carbon dioxide as zero.

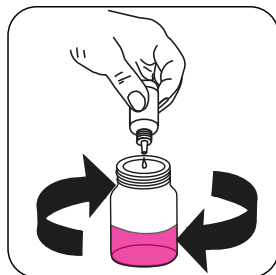


If Carbon dioxide is present sample will remain colourless.



Attention! Record the number of drops that will be added. **x drops**

Note: Make sure to swirl the jar after adding each drop!



Add **Carbon Dioxide LR Titrant CDX2** drop by drop to the sample until colouration turns from **colourless** to **pink**.

Calculate test result: Carbon Dioxide (as CO₂) mg/L = Number of drops x factor (see table)