



Free Chlorine
0.1-3 mg/l

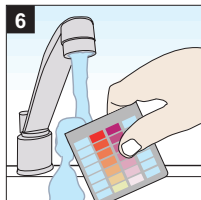
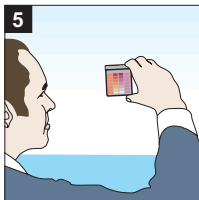
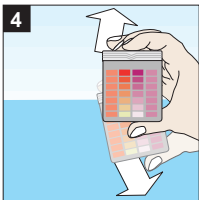
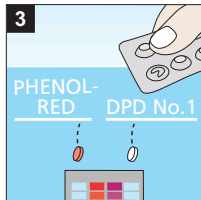
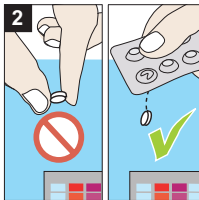
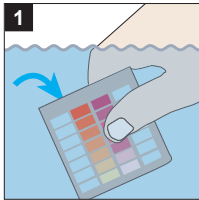
Bromine
0.2-6.8 mg/l

pH Value
6.8-8.2

Test Kit

20 DPD No.1 + 20 PHENOL RED RAPID Tablets

No.: 15 75 20



Giftnotruf Berlin, Poison Center Berlin, Germany, Tel.: (+49) (0)30 / 30 686 790

Technical changes without notice, Printed in Germany, 12/16, No.: 00 38 56 24